



MASTER GUIDE



## CONTENTS

1. Package Contents
2. Key Features
3. System Requirements
4. Installation / Registration / Technical Support
5. Configuring Your Mouse
6. Using Your Razer Boomslang™ Collector's Edition 2007
7. Advanced Setting Guide
8. Safety and Maintenance
9. Legalese
10. WEEE Information

# RAZER BOOMSLANG™ COLLECTOR'S EDITION 2007

Congratulations - there's no turning back.

Razer Boomslang™ Collector's Edition 2007 - The Mouse With Killer Instincts.™

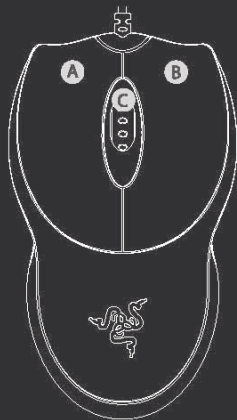
The Razer Boomslang™ first revolutionized the gaming mouse in the summer of 1999 where it blew away the existing competition with exceptional performance and superior aesthetics. With the Razer Boomslang™ Collector's Edition 2007, we pay homage to the mouse that was designed and engineered For Gamers.By Gamers.™

## 1. PACKAGE CONTENTS

- Razer Boomslang™ Collector's Edition 2007
- Master Guide
- Installation CD
- Authenticity Card
- Commemorative Booklet

## 2. KEY FEATURES

Default button assignments



A Mouse button 1 - Left click

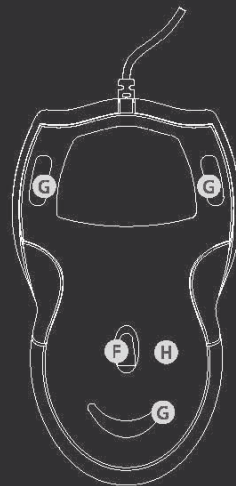
B Mouse button 2 - Right click

C Mouse button 3 - Scroll wheel and button



D Mouse button 5

E Mouse button 4



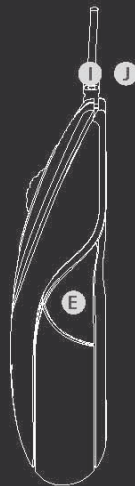
F 3D Infrared sensor Powered by Razer Precision™

G UltraSlick™ Teflon feet

H Razer Synapse™

I 1000Hz (1ms) Response Time

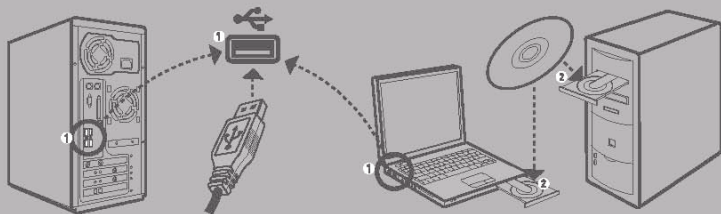
J 16-bit Ultra-Wide Data Path



### 3. SYSTEM REQUIREMENTS

- PC with built-in USB port
- Windows® XP/x64/MCE 2005/Vista
- CD-ROM drive
- 35MB free hard disk space

### 4. INSTALLATION/ REGISTRATION/ TECHNICAL SUPPORT



#### INSTALLING YOUR MOUSE

Windows XP / x64 / MCE 2005 / Vista installation instructions

1. Plug the mouse into the USB port of your computer.
2. Insert the Razer™ driver CD into your CD-ROM.
3. The Setup screen appears. Click NEXT.
4. Read the license agreement and click NEXT.

5. Select the Program Folder where the driver software will reside. Click NEXT.
6. Select the location for the Razer™ menu. Click NEXT.
7. The install screen appears. The software will load automatically.
8. A screen appears indicating that the installation is complete. Click FINISH.
9. Restart your system.

**Note:** When you install the XP driver while using a particular USB port, it will not automatically utilize the Razer™ driver when you plug the Razer Boomslang™ CE into another USB port later. We recommend you assign a permanent port for the Razer Boomslang™ CE.

#### REGISTER YOUR RAZER™ PRODUCT

At the end of the Razer™ software installation, just follow the prompts to get instant gratification at [www.razerzone.com](http://www.razerzone.com)

#### What you'll get:

- 2 years limited manufacturer's warranty
- Free online support

#### TECHNICAL SUPPORT

For technical support, please visit [www.razersupport.com](http://www.razersupport.com).

Technical support for US/Canada customers only, please send email to [techsupport.us@razersupport.com](mailto:techsupport.us@razersupport.com) or call [888] 697-2037 from 8:00 AM PST/PDT to 5:00 PM PST/PDT, Monday through Friday, excluding major USA holidays.

## S. CONFIGURING YOUR MOUSE

### RAZER SYNAPSET™ ONBOARD FUNCTIONS

All settings will be saved on the Profile you have currently selected and will be available on another computer even without the Razer Boomslang CE Configurator installed. [Note: On-The-Fly Sensitivity™ requires the Razer Boomslang™ CE driver to be installed].

### MAIN WINDOW



### Button Assignment

If the button function is not listed, or if you would like to assign a macro, select Advanced Functions from the drop down menu. Macros can be up to 8 characters in length, and Special Keys may be selected from the appropriate sub-menus.

### Polling Rate

Set the polling rate of the Razer Boomslang™ CE: 125Hz (8ms), 500Hz (2ms) or 1000Hz (1ms). Do note that any change to polling rate will only take effect after you reboot your computer.

### DPI Switcher

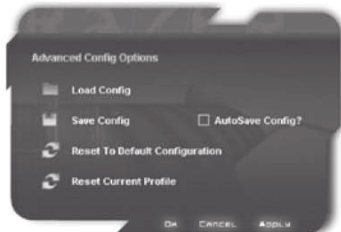
Set the DPI of the Razer Boomslang™ CE. Note that you can also program DPI switching to any button on the Razer Boomslang™ CE. (e.g. Program mouse button 4 to 1400dpi, mouse button 5 to 400 dpi)

### Profile

Change the currently active Profile.

## CONFIG. SAVE/LOAD SETTINGS

- Load Config: Allows you to load a previously saved configuration
- Save Config: Save your current configuration to file.
- Reset to Default Configuration: Set the Razer Boomslang™ CE to factory default.
- Reset Current Profile: Reset the Current Profile to default.

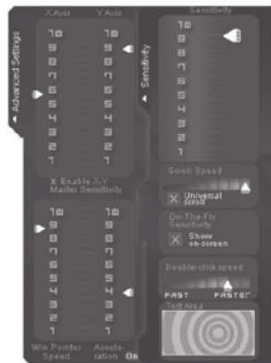


Repeat steps 1 to 5 above for each Profile which will be stored onboard your Razer Boomslang™ CE without the need for software drivers in the future.

Note: Only Razer Synapse™ features are retained in the onboard memory of the Razer Boomslang™ CE.

### DRIVER FEATURES (NON-RAZER SYNAPSE™)

The features listed here require the Razer Boomslang™ CE software driver to be installed and the Razer Boomslang™ CE Tray Icon to be active. This can be accessed by clicking the Sensitivity and Advanced tab from the Main Window. Each setting will be saved to the current Profile on the current machine only.



### Sensitivity Options

Adjust the pointer sensitivity.

### Scroll Speed

Adjust the scroll wheel speed.

### Universal Scroll

Clicking the middle mouse button and dragging the mouse will scroll in the direction of the mouse movement.

### On-The-Fly Sensitivity™

Show On-The-Fly Sensitivity on screen when active. Activate this feature through the Button Assignment.

### Double-click speed

Adjust the double-click speed.

### Advanced Settings

Adjust X/Y sensitivity separately.

### Enable X-Y Master Sensitivity

This must be enabled in order for individual adjustments to X-Y sensitivity to be effective.

### Windows Pointer Speed

Adjust Windows pointer speed (as per Windows Mouse Control Panel). Takes effect only after reboot.

### Acceleration

Turn on/off pointer acceleration and set acceleration level. Acceleration is not recommended for gaming.

## 6. USING YOUR RAZER BOOMSLANG™ CE

Your Razer Boomslang™ CE will remember all Razer Synapse™ settings from computer to computer without the need to install software drivers on each computer.

### SWITCHING PROFILES

You can switch between the Profiles of your Razer Boomslang™ CE in 3 ways:

- By selecting the active Profile in the Razer Boomslang CE Configurator,
- Button programmed via the Razer Boomslang CE Configurator in the Main Window,
- By holding down Button 4 and 5, then press Button 3 to advance one Profile.

When the active Profile is switched, the Razer Boomslang™ CE will flash the corresponding number of times (for example, if Profile 3 is activated, the Razer Boomslang™ CE will flash 3 times to indicate that is the Profile you have selected).

It will remember the current active Profile even if turned off and will boot up in the active Profile.

### ON-THE-FLY SENSITIVITY™

If a button has been assigned to "On-The-Fly Sensitivity™", pressing the assigned button and moving the scroll wheel will produce a bar on the lower right hand corner of your screen, allowing you to dynamically adjust your sensitivity settings in the application. This feature requires the driver to be installed.

### DRIVER AND FIRMWARE UPDATES

You'll be able to update the Razer™ driver software and firmware by clicking Update in the upper left hand corner of the panel. Clicking on Update will bring you to [www.razerzone.com](http://www.razerzone.com) to download the latest driver and firmware.

## 7. advanced settings guide

### Sensitivity

Mouse sensitivity is an internal filter of the driver. The maximum sensitivity setting of 10 is unfiltered. Each incremental step or setting is a 10% decrease, e.g. 1 setting will decrease mouse pointer input to 10% [i.e. a linear graph].

### Acceleration

Acceleration is an internal filter of the driver, and is primarily a legacy option for low dpi mice users. With acceleration enabled, the faster you swipe the mouse, additional movement is added. Windows XP has acceleration turned on by default as a convenience for users assuming that everyone will have 400dpi mice, but this will likely be a hindrance to most gamers and precision users who require greater accuracy. The 'acceleration off' option (default) turns off internal acceleration only and does not affect Windows XP acceleration, which can be turned off via the Control Panel, Mouse, Pointer Options, and unselecting 'Enhance Pointer Precision'.

### Windows Pointer Speed

Pointer speed is the Windows implementation of Sensitivity. In Windows XP, a setting of '5' means there is no filtering (default). This bar is included as a convenience.

### DPI switcher - Resolution

Resolution is how many counts per inch of movement that is sent by the mouse hardware to the OS. e.g. 400dpi means a movement of one inch will result in 400 counts of movement. Without any of the above filters operating, this will result in 400 pixels of movement on the screen.

### Independent X and Y-axis Settings

You can preset independent X-axis (sensitivity movements side to side) and Y-axis (sensitivity movements up and down). When this feature is enabled you will see a new on-the-fly interface bar when acted on their screen that allows further sensitivity adjustments.

### RESETTING TO FACTORY DEFAULT

To reset the Razer Boomslang™ CE to factory default, access the Razer Boomslang CE Configurator and click 'Config - Save/Load Settings'. Click 'Reset to Default Configuration' and click 'OK'.

**NB: ALL CONFIGURATION SETTINGS WILL BE LOST WHEN YOU RESET THE RAZER BOOMSLANG™ CE TO FACTORY DEFAULT SETTINGS. ALL CONFIGURATION SETTINGS WILL NEED TO BE RE-ENTERED OR LOADED FROM THE CONTROL PANEL AFTER THE RAZER BOOMSLANG™ CE IS RESET.**

## 8. safety and maintenance

### SAFETY GUIDELINES

The Razer Boomslang™ CE uses an infrared sensor and under normal use presents no danger. However, using it other than that prescribed herein puts the user at risk of hazardous radiation exposure.

In order to achieve maximum safety while using your mouse, we suggest that you adopt the following guidelines:

- Avoid looking directly into the infrared beam of your mouse or pointing the beam in any one else's eye. Note that the infrared beam is NOT visible to the naked human eye and is set on an always on mode.
- Should you have trouble operating the mouse properly and troubleshooting does not work, unplug the device and contact the Razer hotline or go to [www.razerzone.com](http://www.razerzone.com) for support. Do not attempt to service or fix the device yourself at any time.
- Do not take apart the mouse (doing so will also void your warranty) and do not attempt to service it yourself or operate it under abnormal current loads.
- Keep your mouse away from liquid, humidity or moisture. Operate your mouse only within the specified temperature range of 0°C(32°F) to 40°C(104°F). Should you operate it in a temperature that is beyond this range, unplug and switch off the device in order to let the temperature stabilize within the optimal temperature range.

### COMFORT

Here are some tips to ensure that you are comfortable while using your mouse. Research has shown that long periods of repetitive motion, improper positioning of your computer peripherals, incorrect body position, and poor habits may be associated with physical discomfort and injury to nerves, tendons, and muscles. Please follow these guidelines to ensure comfortable use of your mouse and avoid injury.

- Position your keyboard and monitor directly in front of you with your mouse next to it. Place your elbows next to your side, not too far away and your mouse within easy reach.
- Adjust the height of your chair and table so that the keyboard and mouse are at or below elbow height.

3. Keep your feet well supported, posture straight and your shoulders relaxed.

4. During gameplay, relax your wrist and keep it straight. If you do the same tasks with your hands repeatedly, try not to bend, extend or twist your hands for long periods.

5. Do not rest your wrists on hard surfaces for long periods. Use a wrist support such as Razer's gel-filled eXactRest™ to support your wrist while gaming.

6. Customize the buttons on your mouse to suit your style of gaming in order to minimize repetitive or awkward motions while gaming.

7. Make sure that your mouse fits comfortably in your hands.

8. Do not sit in the same position all day. Get up, step away from your desk and do exercises to stretch your arms, shoulders, neck and legs.

9. If you should experience any physical discomfort while using your mouse, such as pain, numbness, or tingling in your hands, wrists, elbows, shoulders, neck or back, please consult a qualified medical doctor immediately.

#### MAINTENANCE AND USE

The Razer Boomslang™ CE is equipped with an infrared sensor which has a tracking beam which is invisible to the naked human eye. There is a little regular maintenance to keep the Razer Boomslang™ CE in optimum condition. Once a month we recommend you unplug the mouse from the USB port and clean the lens below the Razer Boomslang™ CE with a soft cloth or cotton swab. Use a little warm water but no soap or harsh cleaning agents. To get the ultimate experience in movement and control, we highly recommend a premium mousing surface from Razer. Some surfaces will cause undue wear on the feet requiring constant wear and eventual replacement. Do note that the sensor of the Razer Boomslang™ CE is 'tuned' or optimized especially for the Razer™ mousing surfaces. The Razer Boomslang™ CE has been optimized with Razer™ mousing surfaces and this means that the sensor has been tested extensively to confirm that it reads and tracks best on Razer™ mousing surfaces. Do note that other premium mousing surfaces from companies like Everglide may work just as well.

#### 9. LEGAL USE

##### COPYRIGHT INFORMATION

©2007 Razer USA Ltd. All Rights Reserved. Razer™, the Razer triple-headed snake logo, the Razer distressed word logo, the Razer Boomslang™, the Razer Boomslang™ logo, This is Not Your Mother's Mouse™, the mouse with killer instincts™, On-The-Fly-Sensitivity™, Razer Synapse™ are all trademarks of Razer™. All other trademarks are the property of their respective owners. Razer™ assumes no responsibility for any errors that may appear in this manual. Information contained herein is subject to change without notice.

Razer™ may have patents, patent applications, trademarks, copyrights, trade secrets or other property rights, intellectual and otherwise concerning the product and subject matter in this manual. Except as is provided in any written license agreement provided by Razer™, furnishing of this manual does not give you a license to any such patents, trademarks, copyrights or other intellectual property rights, whether registered or otherwise.

**SOFTWARE LICENSE AGREEMENT (AGREEMENT)**  
RAZER™ IS WILLING TO LICENSE THE ENCLOSED SOFTWARE TO YOU ONLY ON THE CONDITION THAT YOU ACCEPT ALL OF THE TERMS CONTAINED IN THIS LICENSE AGREEMENT.

This is a legal agreement between you (either an individual end-user, corporate entity or any other entity whatsoever) and Razer™. By installing, updating, copying or utilizing in any way the software, you are agreeing to be bound by the terms and conditions of this Agreement. If you do not agree to the terms of this Agreement, do not install the software and promptly return the software package and other items that are part of this product in their original package with your payment receipt to your point of purchase for a full refund.

##### GRANT OF LICENSE

Razer™ grants you a non-exclusive, revocable license to use one copy of the enclosed software program, licensed and not sold to you, ("Software") on one computer only with the Razer™ product you have purchased. No other rights are granted. The Software is in use if it is installed, including but not limited to loaded on the computer's permanent or temporary memory. For backup purposes only, you may make one copy of the Software for your own use. You must include on the backup copy all copyright

and other notices included in the Software as supplied by Razer™. Installation on a network server for the sole purpose of your internal distribution of the Software is permitted only if you have purchased an individual Software package or concurrent dedicated licenses for each networked computer to which the Software is distributed.

##### RESTRICTIONS

Razer™ retains full ownership of the Software. You shall not directly and/or indirectly attempt to decompile, disassemble, reverse-engineer, or modify the Software licensed to you in any way except as allowed by law. You may not transmit the Software over a network (except as expressly permitted above) or electronically using any means. You may not directly and/or indirectly transfer the Software except upon a permanent transfer of the enclosed Razer product provided that all Software updates are included in the transfer, you do not retain a copy of the Software, and the transferee agrees to be bound by the terms and conditions in this license. Upon any violation of any of the provisions of the Agreement, your rights to use the software shall automatically terminate and all copies of the Software must be returned to Razer™ or destroyed.

##### LIMITATION OF LIABILITY

The warranties set forth in this agreement replace and/or supersede all other warranties and you remedies for breach of warranty are expressly limited to those herein set forth. Razer™ expressly disclaims all other warranties to the extent allowed by law including, but not limited to, the implied warranties of merchantability, fitness for a particular purpose and non-infringement of third-party rights with respect to the documentation, software (including patches and/or updates) and hardware. No Razer™ supplier, dealer, agent, or employee is authorized to make any modification, extension or alteration of the warranty or to substitute products or services, lost profits, loss of information or data, or any other special, indirect, consequential or incidental damages arising in any way out of the distribution of, sale of, resale of, use of, or inability to use any product or software subject to warranty herein set forth. In no event will Razer™ be liable for any special, incidental, indirect or consequential damages whatsoever.

##### COSTS OF PROCUREMENT PRODUCT OR SERVICE

For the avoidance of doubt, in no event will Razer™ be liable for any costs of procurement unless it has been advised of the possibility of such damages, and in no case shall Razer™ be liable for any costs of procurements liability exceeding the actual money paid for the products subject to warranty at issue.

In the event some jurisdictions do not allow the limitation of implied warranties or liability for incidental, consequential, special, or indirect damages, the above limitation may not apply. The above limitations will not apply in case of personal injury where and to the extent that applicable laws require such liability.

##### U.S. GOVERNMENT RESTRICTED RIGHTS

The Software is provided to the U.S. government only with restricted rights and limited rights. Use, duplication, or disclosure by the U.S. Government is subject to restrictions set forth in 48 C.F.R. 2.101 (October 1995), disclosing of "Commercial Computer Software" and "Commercial Computer Software Documentation as such terms are used in 48C.F.R. 12.212 (September 1995), and in FAR Sections 52-227-14 and 52-227-19 (DFARS Section 52-227-7013 (1) (i)), or their successors, as applicable. Consistent with 48 C.F.R. 12.512 and 48 C.F.R. 227-7202-1 through 27-7204-4 (June 1995), or any successor regulations, this Software is provided to U.S. Government users pursuant to the terms and conditions herein.

##### FCC DECLARATION OF CONFORMANCE

This equipment has been tested and found to comply with the limits for a Class B digital device, pursuant to part 15 of the FCC Rules. These limits are designed to provide reasonable protection against harmful interference in a residential installation. This equipment generates, uses and can radiate radio frequency energy and, if not installed and used in accordance with the instructions, may cause harmful interference to radio communications. However, there is no guarantee that interference will not occur in a particular installation. If this equipment does cause harmful interference to radio or television reception, which can be determined by turning the equipment off and on, the user is encouraged to try to correct the interference by one or more of the following measures:



Reorient or relocate the receiving antenna.

Increase the separation between the equipment and the receiver.

Connect the equipment into an outlet on a circuit different from that to which the receiver is connected.

Consult the dealer or an experienced radio TV technician for help.

For more information, refer to the online help system on your Razer Boomslang™ CE CD ROM or [www.razerzone.com](http://www.razerzone.com)

### 3.0. WEEE INFORMATION



#### English

Correct Disposal of This Product (Waste Electrical & Electronic Equipment)

(Applicable in the European Union and other European countries with separate collection systems)

This marking shown on the product or its literature, indicates that it should not be disposed with other household wastes at the end of its working life. To prevent possible harm to the environment or human health from uncontrolled waste disposal, please separate this from other types of wastes and recycle it responsibly to promote the sustainable reuse of material resources. Household users should contact either the retailer where they purchased this product, or their local government office, for details of where and how they can take this item for environmentally safe recycling. Business users should contact their supplier and check the terms and conditions of the purchase contract. This product should not be mixed with other commercial wastes for disposal.

#### Fransés

Comment éliminer ce produit (déchets d'équipements électriques et électroniques)

Applicable dans les pays de l'Union Européen et aux autres pays européens disposant de systèmes de collecte sélective. Ce symbole sur le produit ou sa documentation indique qu'il ne doit pas être éliminé en fin de vie avec les autres déchets ménagers. L'élimination incontrôlée des déchets pouvant porter préjudice à l'environnement ou à la santé humaine, veuillez le séparer des autres types de déchets et le recycler de façon responsable. Vous favoriserez ainsi la réutilisation durable des ressources matérielles. Les particuliers sont invités à contacter le distributeur leur ayant vendu le produit ou à se renseigner auprès de leur mairie pour savoir où et comment ils peuvent se débarrasser de ce produit afin qu'il soit recyclé en respectant l'environnement. Les entreprises sont invitées à contacter leurs fournisseurs et à consulter les conditions de leur contrat de vente. Ce produit ne doit pas être éliminé avec les autres déchets commerciaux.

#### Italiano

Corretto smaltimento del prodotto (rifiuti elettrici ed elettronici)

(Applicabile in i paesi dell'Unione Europea e in quelli con sistemi di raccolta differenziata)

Il marchio riportato sul prodotto o sulla sua documentazione indica che il prodotto non deve essere smaltito con altri rifiuti domestici al termine del ciclo di vita. Per evitare eventuali danni all'ambiente o alla salute causati dall'opportuno smaltimento dei rifiuti, si invita l'utente a separare questo prodotto da altri tipi di rifiuti e a riciclarlo in maniera responsabile per favorire il riutilizzo sostenibile delle risorse materiali. Gli utenti domestici sono invitati a contattare il rivenditore presso il quale è stato acquistato il prodotto o l'ufficio locale preposto per tutte le informazioni relative alla raccolta differenziata e al riciclaggio per questo tipo di prodotti. Gli utenti aziendali sono invitati a contattare il proprio fornitore a verificare i termini e le condizioni del contratto di acquisto. Questo prodotto non deve essere smaltito unitamente ad altri rifiuti commerciali.

#### Deutsch

Korrekte Entsorgung dieses Produkts (Elektronikmüll)

(Anzuwenden in den Ländern der Europäischen Union und anderen europäischen Ländern mit einem separaten Sammelsystem)

Die Kennzeichnung auf dem Produkt bzw. auf der dazugehörigen Literatur gibt an, dass es nach seiner Lebensdauer nicht zusammen mit dem normalen Hausabfall entsorgt werden darf. Entsorgen Sie dieses Gerät bitte getrennt von anderen Abfällen, um der Umwelt bzw. der menschlichen Gesundheit nicht durch unkontrollierte Müllabfuhrung zu schaden. Recyceln Sie

das Gerät, um die nachhaltige Wiederverwertung von stofflichen Ressourcen zu fördern. Private Nutzer sollten den Händler, bei dem das Produkt gekauft wurde, oder die zuständigen Behörden kontaktieren, um in Erfahrung zu bringen, wie sie das Gerät auf umweltfreundliche Weise recyceln können. Gewerbliche Nutzer sollten sich in ihrem Lieferanten wenden und die Bedingungen des Verkaufsvertrags konsultieren. Dieses Produkt darf nicht zusammen mit anderem Bewerbmüll entsorgt werden.

#### Español

Eliminación correcta de este producto (material eléctrico y electrónico de desecho)

(Aplicable en la Unión Europea y en países europeos con sistemas de recogida selectiva de residuos). La presencia de esta marca en el producto o en el material informativo que lo acompaña, indica que al finalizar su vida útil no deberá eliminarse junto con otros residuos domésticos. Para evitar los posibles daños al medio ambiente o a la salud humana que representa la eliminación incontrolada de residuos, separe este producto de otros tipos de residuos y recíclolo correctamente para promover la reutilización sustantiva de recursos materiales. Los usuarios particulares pueden contactar con el establecimiento donde adquirieron el producto, o con las autoridades locales pertinentes, para informarse sobre cómo y dónde pueden llevarlo para que sea sometido a un reciclaje ecológico y seguro. Los usuarios comerciales pueden contactar con su proveedor y consultar las condiciones del contrato de compra. Este producto no debe eliminarse mezclado con otros residuos comerciales.

#### Português

Eliminação Correta Deste Produto (Resíduo de Equipamentos Eléctricos e Electrónicos)

Esta marca, apresentada no produto ou na sua literatura indica que ele não deverá ser eliminado juntamente com os resíduos domésticos indiferenciados no final do seu período de vida útil. Para impedir danos ao ambiente e à saúde humana causados pela eliminação incontrolada de resíduos deverá separar este equipamento de outros tipos de resíduos e reciclá-lo de forma responsável, para promover a reutilização sustentável dos recursos materiais. Os utilizadores domésticos deverão

contactar ou o estabelecimento onde adquiriram este produto ou as entidades oficiais locais para obterem informações sobre onde e de que forma podem levar este produto para permitir efectuar um reciclagem seguro em termos ambientais. Os utilizadores profissionais deverão contactar o seu fornecedor e consultar os termos e condições do contrato de compra. Este produto não deverá ser misturado com outros resíduos comerciais para eliminação.

#### Dansk

Korrekt affaldsbortskaffelse af dette produkt (elektrisk & elektronisk udstyr)

Mærket på dette produkt eller i den medfølgende dokumentation betyder, at produktet ikke må bortskaffes sammen med almindeligt husholdningsaffald efter endt levetid. For at undgå skadelige miljø- eller sundhedspåvirkninger på grund af ukontrolleret affaldsbortskaffelse skal dette produkt bortskaffes særskilt fra andet affald og indleveres behørigt til fremme for bæredygtig materialgenvinning. Hjembrugere bedes kontakte forhandleren, hvor de har købt produktet, eller den lokale myndighed for plyngning om, hvor og hvordan de kan indlevere produktet med henblik på miljøvenlig genvinning. Erhvervsbrugere bedes kontakte leverandøren og læse betingelserne og vilkårene i købekontrakten. Dette produkt bør ikke bortskaffes sammen med andet erhvervsaffald.