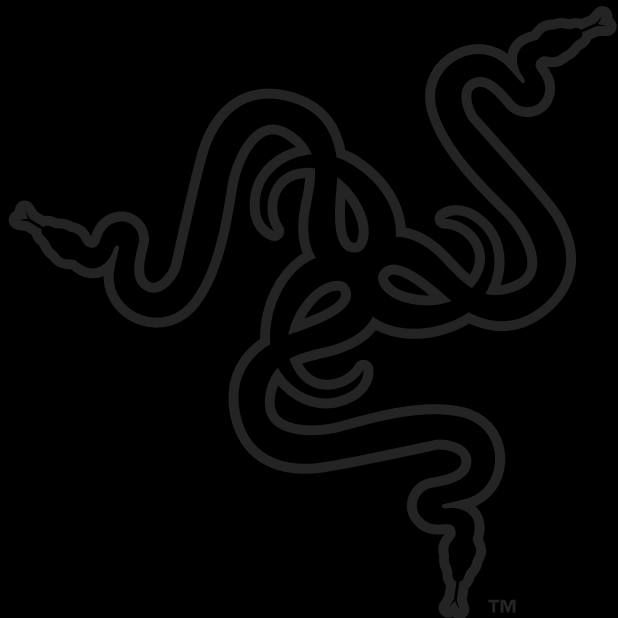


RAZER™  
**Salmosa™**  
high precision 36 infrared gaming mouse

MASTER GUIDE



## CONTENTS

- 02 Introduction
- 03 Package Contents
- 03 System Requirements
- 04 Installation / Registration / Technical Support
- 06 Key Features
- 07 Configuring Your Razer Salmosa
- 12 Using Your Razer Salmosa
- 14 Advanced Settings Guide
- 15 Safety And Maintenance
- 16 Legalese
- 18 FCC Declaration of Conformance
- 19 WEEE information

# RAZER<sup>®</sup> Salmosa™

high precision 3G infrared gaming mouse

Congratulations on purchasing your very own Razer Salmosa™ gaming mouse. With the 1800dpi Razer Precision™ 3G infrared sensor at your disposal, be prepared to experience a new level of accuracy. Complementing this incredible precision is its lightweight and compact body, designed for optimal fingertip grip.

Your time for gaming greatness has arrived.

Razer Salmosa  
USB 1.1/2.0 mouse for Windows® XP / x64 / Vista / Vista64

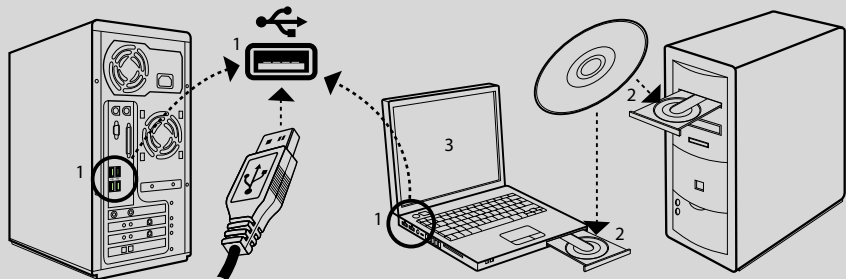
## PACKAGE CONTENTS

- Razer Salmosa Gaming Mouse
- Certificate of Authenticity
- Quick Start Guide
- Master Guide with Razer™ Software Driver Downloader CD

## SYSTEM REQUIREMENTS

- PC with USB port
- Windows® XP / x64 / Vista / Vista64
- Internet connection (for driver installation)
- CD-ROM drive
- 35MB free hard disk space

## INSTALLATION / REGISTRATION / TECHNICAL SUPPORT



### Windows® XP / x64 / Vista / Vista64 Installation Instructions

1. Plug mouse into the USB port of your computer.
2. Insert the Razer Software Driver Downloader CD into your CD-ROM drive.
3. When the Razer Software Driver Downloader setup screen appears, please select your language. Click NEXT.
4. Read the license agreement. Click I AGREE if you accept all terms of the agreement.
5. Please wait while the Downloader downloads the latest driver installer.

6. Once the driver installer is downloaded, click INSTALL to start the installation immediately; else the installation will begin in 5 seconds.
7. Follow the onscreen instructions.
8. When the installation is completed, follow the instructions onscreen to restart your computer. Click FINISH.

### REGISTERING YOUR RAZER SALMOSA

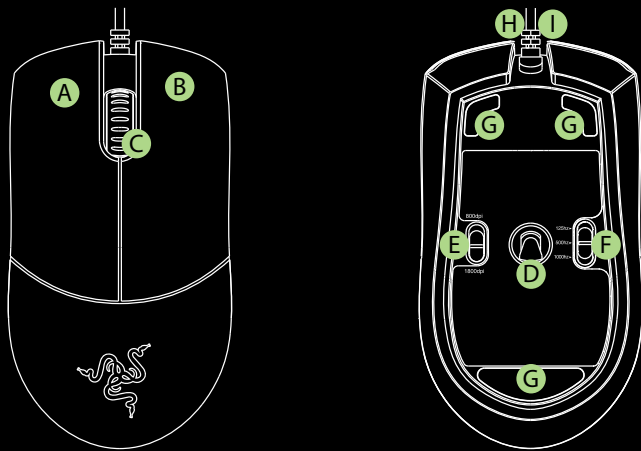
Please visit [www.razerzone.com/registration/](http://www.razerzone.com/registration/) for online product registration.

What you'll get:

- 2 years' limited manufacturer's warranty
- Free online technical support at [www.razersupport.com](http://www.razersupport.com).

## KEY FEATURES

Default button assignments



A Mouse button 1 – Click

B Mouse button 2 – Menu

C Mouse button 3 – Scroll wheel and button

D Razer Precision™ 3G Infrared Sensor

E Mechanical dpi switch

F Mechanical polling rate switch

G Ultraslick™ Teflon® feet

H 1000Hz (1ms) response time

I 16-bit ultra-wide data path

## CONFIGURING YOUR RAZER SALMOSA

The features listed here require the Razer Salmosa software driver to be installed and the Razer Salmosa Tray Icon to be active. Each setting will be saved to the current Profile on the current machine only.

### SENSITIVITY TAB

#### Sensitivity

Adjust the Razer Salmosa's pointer sensitivity.

#### On-The-Fly Sensitivity™

Activate On-The-Fly Sensitivity to change the sensitivity settings without the need to enter the configuration menu.

Activating the SHOW ON-SCREEN option will show a small display indicating the sensitivity range whenever you make changes on the fly.

#### Double-Click Speed

Adjust the speed as fast as you want it. Move the pointer along the scale, and then double-click the TEST AREA to try the selected speed.

#### Advanced

Clicking the ADVANCED button allows you to access the Advanced Sensitivity Settings.



## ADVANCED SENSITIVITY SETTINGS

### Master Sensitivity Control

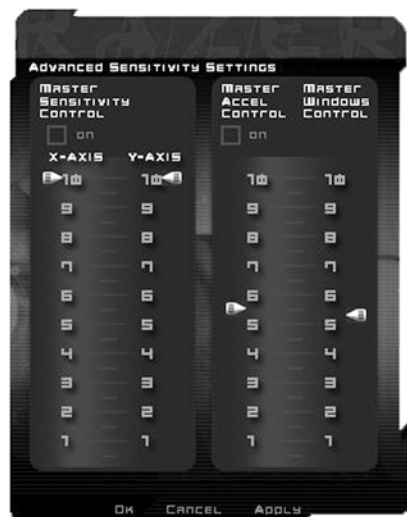
Changes the individual sensitivity setting for the X and Y axis of your Razer Salmosa. Master sensitivity control can be enabled/disabled via the checkbox.

### Master Acceleration Control

Allows adjustment of the pointer acceleration. You can also choose to switch on/off this function.

### Master Windows Control

Adjusts the Windows pointer speed (as per Windows Mouse Control Panel). Note: Effect will only take place after rebooting.



## SCROLL WHEEL TAB

The scrolling rate can be adjusted to suit your preference by changing the scroll wheel speed. The speed can be set from FAST to FASTEST.

### Scroll Wheel Speed

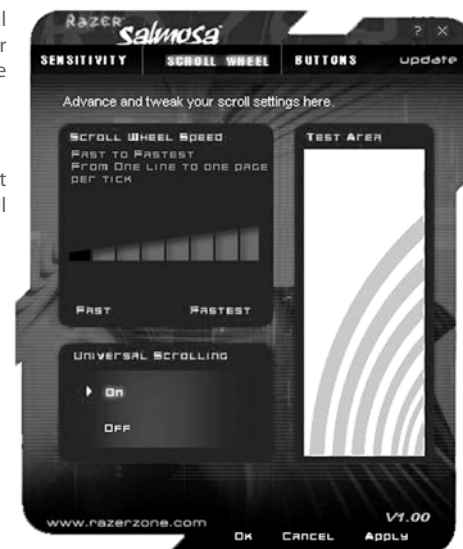
Adjust the scroll wheel speed.

### Universal Scrolling

Click and hold the assigned "Universal Scrolling" button. Drag your Razer Salmosa to scroll in the direction of the mouse movement.

### Test Area

Scrolling in this area allows you to test the changes you've made to your scroll wheel speed.



## BUTTONS TAB

### Orientation

Select to indicate whether you are right-handed or left-handed.

### Button Assignment and Scroll Wheel Assignment

Under 'BUTTON ASSIGNMENT', you can assign various functions to the mouse buttons.

The following functions are possible:

### Click:

Normal mouse click. By default, with the right-handed setting, the left button is set as click.

### Menu:

Opens a context-sensitive menu. By default, with the right-handed setting, the right button is set as menu.

### Universal Scrolling:

Activate universal scrolling by clicking and holding the assigned button.

### Double Click:

Perform a double click with the assigned button.



### Advanced:

If the button function or key is not listed, or if you would like to assign a macro, select "Advanced" from the drop-down menu. Macros can be up to 8 keystrokes and "On-The-Fly Sensitivity" can be assigned in addition to the macro.

### Windows Button 4:

Issues a "Back" command in Windows Explorer / Internet Explorer.

### Windows Button 5:

Issues a "Forward" command in Windows Explorer / Internet Explorer.

### On-The-Fly-Sensitivity:

Enables change of sensitivity settings of your mouse on the fly without the need to enter the configuration menu.

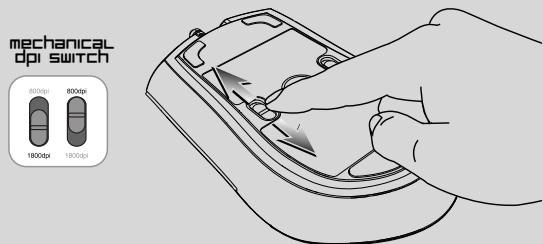
### Button Off:

Disables any function on the assigned button.

## USING YOUR RAZER SALMOSA

### SWITCHING DPI

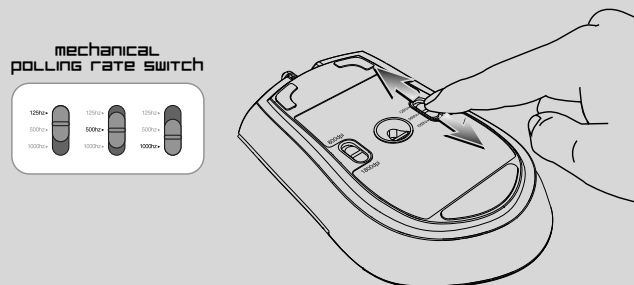
You can switch between 800dpi and 1800dpi by actuating the mechanical dpi switch.



### SWITCHING POLLING RATE

You can switch between 125Hz, 500Hz and 1000Hz by actuating the mechanical polling rate switch.

Note: the mouse will be momentarily inactive while it switches to the new polling rate.



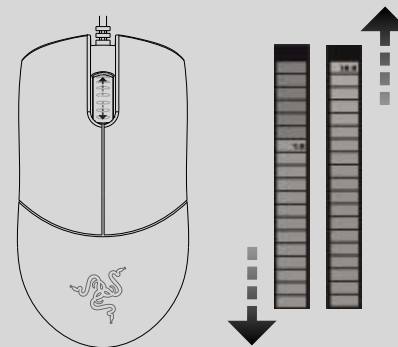
## CREATING MACROS

A macro is a short sequence of keystrokes. You can create a macro by following the instructions below.

1. Load the Razer Configurator.
2. Choose a mouse button and select "Advanced" from its dropdown menu.
3. Type in the desired sequence of keystrokes. You can also include "On-The-Fly Sensitivity" in addition to the macro.
4. Click APPLY when done.

### ON-THE-FLY SENSITIVITY

If "On-The-Fly Sensitivity" has been assigned to a button, pressing that assigned button and moving the scroll wheel will produce a bar at the lower right-hand corner of your screen, allowing you to dynamically adjust your sensitivity settings. This feature requires the driver to be installed.



### DRIVER UPDATES

You'll be able to update the Razer driver software by clicking UPDATE in the upper right hand corner of the panel. This will connect you to [www.razer-support.com](http://www.razer-support.com) for the latest driver downloads.



## advanced settings guide

### Sensitivity

Mouse sensitivity is an internal filter of the driver. The maximum sensitivity setting of 10 is unfiltered. Each incremental stop or setting is a 10% decrease, i.e. 1 setting will decrease mouse pointer input to 10% (i.e. a linear graph).

### Acceleration

Acceleration is an internal filter of the driver, and is primarily a legacy option for low dpi mice users. With acceleration enabled, faster mouse movements cover additional on-screen distance. Windows XP has acceleration turned on by default as a convenience for users assuming that everyone will have 400dpi mice, but this will likely be a hindrance to most gamers and precision users who require greater accuracy. The 'acceleration off' option (default) turns off internal acceleration only and does not affect Windows XP acceleration, which can be turned off via the Control Panel, Mouse, Pointer Options, and unselecting 'Enhance Pointer Precision'.

### Windows Pointer Speed [Windows Only]

Pointer speed is the Windows implementation of Sensitivity. In Windows XP, a setting of '5' means there is no filtering (default). This bar is included as a convenience.

### DPI switcher - Resolution

Resolution is the number of counts per inch of movement sent by the mouse hardware to the OS. E.g. 400dpi means a movement of one inch will result in 400 counts of movement. Without any of the above filters operating, this will result in 400 pixels of movement on the screen.

### Independent X and Y-axis Settings

You can preset independent X-axis (sensitivity movements side to side) and Y-axis (sensitivity movements up and down). When this feature is enabled, a new on-the-fly interface bar that allows further sensitivity adjustments will appear on-screen.

## SAFETY GUIDELINES

In order to achieve maximum safety while using your mouse, we suggest that you adopt the following guidelines:

1. Avoid looking directly into the infrared beam of

your mouse or pointing the beam in any one else's eye. Note that the infrared beam is NOT visible to the naked human eye and is set on an always-on mode.

2. Should you have trouble operating the mouse properly and troubleshooting does not work, unplug the device and contact the Razer hotline or go to [www.razerzone.com](http://www.razerzone.com) for support. Do not attempt to service or fix the device yourself at any time.
3. Do not take apart the mouse (doing so will also void your warranty) and do not attempt to service it yourself or operate it under abnormal current loads.
4. Keep your mouse away from liquid, humidity or moisture. Operate your mouse only within the specified temperature range of 0°C(32°F) to 40°C(104°F). Should you operate it in a temperature that is beyond this range, unplug and switch off the device in order to let the temperature stabilize within the optimal temperature range.

## COMFORT

Here are some tips to ensure that you are comfortable while using your mouse. Research has shown that long periods of repetitive motion, improper positioning of your computer peripherals, incorrect body position, and poor habits may be associated with physical discomfort and injury to nerves, tendons, and muscles. Please follow these guidelines to ensure comfortable use of your mouse and avoid injury.

1. Position your keyboard and monitor directly in front of you with your mouse next to it. Place

your elbows next to your side, not too far away and your mouse within easy reach.

2. Adjust the height of your chair and table so that the keyboard and mouse are at or below elbow height.
3. Keep your feet well supported, posture straight and your shoulders relaxed.
4. During gameplay, relax your wrist and keep it straight. If you do the same tasks with your hands repeatedly, try not to bend, extend or twist your hands for long periods.
5. Do not rest your wrists on hard surfaces for long periods. Use a wrist support such as Razer's gel-filled eXactRest™ to support your wrist while gaming.
6. Customize the buttons on your mouse to suit your style of gaming in order to minimize repetitive or awkward motions while gaming.
7. Make sure that your mouse fits comfortably in your hands.
8. Do not sit in the same position all day. Get up, step away from your desk and do exercises to stretch your arms, shoulders, neck and legs.
9. If you should experience any physical discomfort while using your mouse, such as pain, numbness, or tingling in your hands, wrists, elbows, shoulders, neck or back, please consult a qualified medical doctor immediately.

## MAINTENANCE AND USE

The Razer Salmosa is equipped with an infrared sensor, which has a tracking beam that is invisible to the naked human eye. There is a little regular

maintenance to keep the Razer Salmosa in optimum condition. Once a month we recommend you unplug the mouse from the USB port and clean the lens below the Razer Salmosa with a soft cloth or cotton swab. Use a little warm water but no soap or harsh cleaning agents.

To get the ultimate experience in movement and control, we highly recommend a premium mousing surface from Razer. Some surfaces will cause undue wear on the feet requiring constant care and eventual replacement.

Do note that the sensor of the Razer Salmosa is 'tuned' or optimized especially for the Razer mousing surfaces. This means that the sensor has been tested extensively to confirm that the Razer Salmosa reads and tracks best on Razer mousing surfaces. Other premium mousing surfaces from companies like Everglide™ may work just as well.

## LEGALESE COPYRIGHT INFORMATION

©2008 Razer USA Ltd. All Rights Reserved. Razer™, the Razer Triple-Headed Snake logo, the Razer distressed word logo, Salmosa™ and other trademarks contained herein are the property of Razer USA Ltd and/or its affiliated or associated companies, registered in the United States or other countries.

All other trademarks are the property of their respective owners. Actual product may differ from pictures.

Razer™ assumes no responsibility for any errors that may appear in this software, manual or help file. Information contained herein is subject to change

without notice.

Razer™ may have patents, patent applications, trademarks, copyrights, trade secrets or other property rights, intellectual and otherwise concerning the product and subject matter in this manual and software. Except as is provided in any written license agreement provided by Razer™, furnishing of this manual does not give you a license to any such patents, trademarks, copyrights or other intellectual property rights, whether registered or otherwise. Patent Pending.

## SOFTWARE LICENSE AGREEMENT ('AGREEMENT')

Razer™ IS WILLING TO LICENSE THE ENCLOSED SOFTWARE TO YOU ONLY ON THE CONDITION THAT YOU ACCEPT ALL OF THE TERMS CONTAINED IN THIS LICENSE AGREEMENT. This is a legal agreement between you (either an individual end-user, corporate entity or any other entity whatsoever) and Razer™. By installing, uploading, copying or utilizing in any way the software, you are agreeing to be bound by the terms and conditions of this Agreement. If you do not agree to the terms of this Agreement, do not install the software and promptly return the software package and other items that are part of this product in their original package with your payment receipt to your point of purchase for a full refund.

## GRANT OF LICENSE

Razer™ grants you a non-exclusive, revocable license to use one copy of the enclosed software program, licensed and not sold to you, ("Software") on one computer only with the Razer™ product you have

purchased. No other rights are granted. The Software is in use if it is installed, including but not limited to loaded on the computer's permanent or temporary memory. For backup purposes only, you may make one copy of the Software for your own use. You must include on the backup copy all copyright and other notices included in the Software as supplied by Razer™. Installation on a network server for the sole purpose of your internal distribution of the Software is permitted only if you have purchased an individual Software package or concurrent dedicated license for each networked computer to which the Software is distributed.

## RESTRICTIONS

Razer™ retains full ownership of the Software. You shall not directly and/or indirectly attempt to decompile, disassemble, reverse-engineer, or modify the Software licensed to you in any way except as allowed by law. You may not transmit the Software over a network (except as expressly permitted above) or electronically using any means. You may not directly and/or indirectly transfer the Software except upon a permanent transfer of the enclosed Razer™ product provided that all Software updates are included in the transfer, you do not retain a copy of the Software, and the transferee agrees to be bound by the terms and conditions in this license. Upon any violation of any of the provisions of the Agreement, your rights to use the software shall automatically terminate and all copies of the Software must be returned to Razer™ or destroyed.

## LIMITATION OF LIABILITY

The warranties set forth in this agreement replace and/or supersede all other warranties and your

remedies for breach of warranty are expressly limited to those herein set forth. Razer™ expressly disclaims all other warranties to the extent allowed by law including, but not limited to, the implied warranties of merchantability, fitness for a particular purpose and non-infringement of third-party rights with respect to the documentation, software (including patches and/or updates) and hardware. No Razer™ supplier, dealer, agent, or employee is authorized to make any modification, extension or alteration of the warranty or to substitute products or services, lost profits, loss of information or data, or any other special, indirect, consequential or incidental damages arising in any way out of the distribution of, sale of, resale of, use of, or inability to use any product or software subject to warranty herein set forth. In no event will Razer™ be liable for any special, incidental, indirect or consequential damages whatsoever.

## COSTS OF PROCUREMENT PRODUCT OR SERVICE

For the avoidance of doubt, in no event will Razer™ be liable for any costs of procurement unless it has been advised of the possibility of such damages, and in no case shall Razer™ be liable for any costs of procurements liability exceeding the actual money paid for the products subject to warranty at issue.

In the event some jurisdictions do not allow the limitation of implied warranties or liability for incidental, consequential, special, or indirect damages, the above limitation may not apply. The above limitations will not apply in case of personal injury where and to the extent that

applicable laws require such liability.

## U.S. GOVERNMENT RESTRICTED RIGHTS

The Software is provided to the U.S. government only with restricted rights and limited rights. Use, duplication, or disclosure by the U.S. Government is subject to restrictions set forth in 48 C.F.R. 2.101 (October 1995), consisting of "Commercial Computer Software" and "Commercial Computer Software Documentation as such terms are used in 48 C.F.R. 12.212 (September 1995), and in FAR Sections 52-227-14 and 52-227-19 r DFARS Section 52-227-7013 ©(1) (ii), or their successors, as applicable. Consistent with 48 C.F.R. 12.512 and 48 C.F.R. 227-7202-1 through 27-7204-4 (June 1995), or any successor regulations, this Software is provided to U.S. Government users pursuant to the terms and conditions herein.

## FCC DECLARATION OF CONFORMANCE

This equipment has been tested and found to comply with the limits for a Class B digital device, pursuant to part 15 of the FCC Rules. These limits are designed to provide reasonable protection against harmful interference in a residential installation. This equipment generates, uses and can radiate radio frequency energy and, if not installed and used in accordance with the instructions, may cause harmful interference to radio communications. However, there is no guarantee that interference will not occur in a particular installation. If this equipment does cause harmful interference to radio or television reception, which can be determined by turning

the equipment off and on, the user is encouraged to try to correct the interference by one or more of the following measures:

Reorient or relocate the receiving antenna.

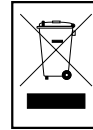
Increase the separation between the equipment and the receiver.

Connect the equipment into an outlet on a circuit different from that to which the receiver is connected.

Consult the dealer or an experienced radio TV technician for help.

For more information, refer to the online help system on your Razer Salmosa™ CD-ROM or [www.razerzone.com](http://www.razerzone.com)

## WEE INFORMATION



### ENGLISH

Correct Disposal of This Product (Waste Electrical & Electronic Equipment)

(Applicable in the European Union and other European countries with separate collection systems) This marking shown on the product or its literature, indicates that it should not be disposed with other household wastes at the end of its working life. To prevent possible harm to the environment or human health from uncontrolled waste disposal, please separate this from other types of wastes and recycle it responsibly to promote the sustainable reuse of material resources. Household users should contact either the retailer where they purchased this product, or their local government office, for details of where and how they can take this item for environmentally safe recycling. Business users should contact their supplier and check the terms and conditions of the purchase contract. This product should not be mixed with other commercial wastes for disposal.

### FRANÇAIS

Comment éliminer ce produit (déchets d'équipements électriques et électroniques) (Applicable dans les pays de l'Union Européen et aux autres pays européens disposant de systèmes de collecte sélective) Ce symbole sur le produit ou sa documentation indique qu'il ne doit pas être éliminé en fin de vie avec les autres déchets ménagers. L'élimination incontrôlée des déchets pouvant porter préjudice à l'environnement ou à la santé humaine, veuillez le séparer des autres types de déchets et le recycler de façon responsable. Vous favoriserez ainsi la réutilisation durable des ressources matérielles. Les particuliers sont invités à contacter le distributeur leur ayant vendu le produit ou à se renseigner auprès de leur mairie pour savoir où et comment ils peuvent se débarrasser de ce produit afin qu'il soit recyclé en respectant l'environnement. Les entreprises sont invitées à contacter leurs fournisseurs et à consulter les conditions de leur contrat de vente. Ce produit ne doit pas être éliminé avec les autres déchets commerciaux.

### ITALIANO

Corretto smaltimento del prodotto (rifiuti elettrici ed elettronici)

(Applicable in i paesi dell'Unione Europea e in quelli con sistema di raccolta differenziata) Il marchio riportato sul prodotto o sulla sua documentazione indica che il prodotto non deve essere smaltito con altri rifiuti domestici al termine del ciclo di vita. Per evitare eventuali danni all'ambiente o alla salute causati dall'inopportuno smaltimento dei rifiuti, si invita l'utente a separare questo prodotto da altri tipi di rifiuti e di riciclarlo in maniera responsabile per favorire il riutilizzo sostenibile delle risorse materiali. Gli utenti domestici sono invitati a contattare il rivenditore presso il quale è stato acquistato il prodotto o l'ufficio locale preposto per tutte le informazioni relative alla raccolta differenziata e al riciclaggio per questo tipo di prodotto. Gli utenti aziendali sono invitati a contattare il proprio fornitore e verificare i termini e le condizioni del contratto di acquisto. Questo prodotto non deve essere smaltito unitamente ad altri rifiuti commerciali.

### ESPAÑOL

Eliminación correcta de este producto (material eléctrico y electrónico de descarte)

(Aplicable en la Unión Europea y en países europeos con sistemas de recogida selectiva de residuos)

La presencia de esta marca en el producto o en el material informativo que lo acompaña, indica que al finalizar su vida útil no deberá eliminarse junto con otros residuos domésticos. Para evitar los posibles daños al medio ambiente o a la salud humana que representa la eliminación incontrolada de residuos, separe este producto de otros tipos de residuos y reciclelo correctamente para promover la reutilización sostenible de recursos materiales. Los usuarios particulares pueden contactar con el establecimiento donde adquirieron el producto, o con las autoridades locales pertinentes, para informarse sobre cómo y dónde pueden llevarlo para que sea sometido a un reciclaje ecológico y seguro. Los usuarios comerciales pueden contactar con su proveedor y consultar las condiciones del contrato de compra. Este producto no debe eliminarse mezclado con otros residuos comerciales.

## DEUTSCH

Korrekte Entsorgung dieses Produkts (Elektromüll)

(Anzuwenden in den Ländern der Europäischen Union und anderen europäischen Ländern mit einem separaten Sammelsystem)

Die Kennzeichnung auf dem Produkt bzw. auf der dazugehörigen Literatur gibt an, dass es nach seiner Lebensdauer nicht zusammen mit dem normalen Haushaltsmüll entsorgt werden darf. Entsorgen Sie dieses Gerät bitte getrennt von anderen Abfällen, um der Umwelt bzw. der menschlichen Gesundheit nicht durch unkontrollierte Müllbeseitigung zu schaden. Recyceln Sie das Gerät, um die nachhaltige Wiederverwertung von stofflichen Ressourcen zu fördern. Private Nutzer sollten den Händler, bei dem das Produkt gekauft wurde, oder die zuständigen Behörden kontaktieren, um in Erfahrung zu bringen, wie sie das Gerät auf umweltfreundliche Weise recyceln können. Gewerbliche Nutzer sollten sich an Ihren Lieferanten wenden und die Bedingungen des Verkaufsvertrags konsultieren. Dieses Produkt darf nicht zusammen mit anderem Gewerbemüll entsorgt werden.

## PORTUGUÊS

Eliminação Correcta Deste Produto (Resíduo de Equipamentos Eléctricos e Electrónicos)

Esta marca, apresentada no produto ou na sua literatura indica que ele não deverá ser eliminado juntamente com os resíduos domésticos indiferenciados no final do seu período de vida útil. Para impedir danos ao ambiente e à saúde humana causados pela eliminação incontrolada de resíduos deverá separar este equipamento de outros tipos de resíduos e reciclá-lo de forma responsável, para promover uma reutilização sustentável dos recursos materiais. Os utilizadores domésticos deverão contactar ou o estabelecimento onde adquiriram este produto ou as entidades oficiais locais para obterem informações sobre onde e de que forma podem levar este produto para permitir efectuar uma reciclagem segura em termos ambientais. Os utilizadores profissionais deverão contactar o seu fornecedor e consultar os termos e condições do contrato de compra. Este produto não deverá ser misturado com outros resíduos comerciais para eliminação.

## DANSK

Korrekt affaldsbortskaffelse af dette produkt (elektrisk & elektronisk udstyr)

Mærket på dette produkt eller i den medfølgende dokumentation betyder, at produktet ikke må bortskaffes sammen med almindeligt husholdningsaffald efter endt levetid. For at undgå skadelige miljø- eller sundhedspåvirkninger på grund af ukontrolleret affaldsbortskaffelse skal dette produkt bortskaffes særskilt fra andet affald og indleveres behørigt til fremme for bæredygtig materialegeninding. Hjemmebrugere bedes kontakte forhandleren, hvor de har købt produktet, eller den lokale myndighed for oplysning om, hvor og hvordan de kan indlevere produktet med henblik på miljøførsvarlig geninding. Erhvervsbrugere bedes kontakte leverandøren og læse betingelserne og vilkårene i købekontrakten. Dette produkt bør ikke bortskaffes sammen med andet erhvervsaffald.

## POLISH

Prawidłowe użycowanie produktu (zwyty sprz t elektryczny i elektroniczny)

Oznaczenie umieszczone na produkcie lub w odnoszących si do niego tekstach wskazuje, że produktu po up ywie okresu użytkowania nie należy usuwa z innymi odpadami pochodzącymi z gospodarstw domowych. Aby unikn szkodliwego wpływu na środowisko naturalne i zdrowie ludzi wskutek niekontrolowanego usuwania odpadów, prosimy o oddzielenie produktu od innego typu odpadów oraz odpowiedzialny recykling w celu promowania ponownego uycia zasobów materialnych jako staej praktyki. W celu uzyskania informacji na temat miejsca i sposobu bezpiecznego dla środowiska recyklingu tego produktu użytkownicy w gospodarstwach domowych powinni skontaktowa si z punktem sprzedaży detalicznej, w którym dokonali zakupu produktu, lub organem wadz lokalnych. Użytkownicy w firmach powinni skontaktowa si ze swoim dostawcą i sprawdzi warunki umowy zakupu. Produktu nie należy usuwa razem z innymi odpadami komercyjnymi.

## GREEK

**Σηστή Διάθεση αυτού του Προϊόντος (Απορρίματα Ηλεκτρικού & Ηλεκτρονικού Εξοπλισμού)**

Τα σηματα που εμφανίζονται επάνω στο προϊόν ή στα εγχειρίδια που το συνοδεύουν, υποδεικνύουν ότι δεν θα πρέπει μαζί με τα υπόλοιπα οικιακά απορρίμματα μετά το τέλος του κύκλου ζωής του. Προκειμένου να αποφευχθούν ενδεχόμενες βλαβερές συνέπειες στο περιβάλλον ή την υγεία εξαιτίας της ανελέγκτης διάθεσης απορριμμάτων, σας παρακαλούμε να το διαχωρίσετε από άλλους τύπους απορριμμάτων και να το ανακυκλώσετε, ώστε να βοηθήσετε στην βιώσιμη επαναχρησιμοποίηση των υλικών πόρων. Οι οικιακοί χρήστες θα πρέπει να έλθουν σε επικοινωνία είτε με τον πωλητή από όπου αγόρασαν αυτό το προϊόν, είτε τις κατά τόπους υπηρεσίες, προκειμένου να πληροφορηθούν τις λεπτομέρειες σχετικά με τον τόπο και τον τρόπο με τον οποίο μπορούν να δώσουν αυτό το προϊόν για ασφαλή προς το περιβάλλον ανακύκλωση. Οι επιχειρησιακοί χρήστες θα πρέπει να έλθουν σε επαφή με τον προμηθευτή τους και να ελέγξουν τους όρους και τις προϋποθέσεις του συμβολαίου πώλησης. Το προϊόν αυτό δεν θα πρέπει να αναμνηνείται με άλλα συνθηματά απορρίμματα προς διάθεση.