



MASTER GUIDE



Congratulations on purchasing your very own Razer Tarantula™ Gaming Keyboard! Razer™ is proud to complete your suite of lethal gaming arsenal with the first highly customizable gaming keyboard designed for hardcore gamers. Developed by a specialized team of gaming engineers, the Razer Tarantula™ delivers superb innovation in functionality and ergonomics to take your game performance to new heights.

Razer Tarantula™ highly customizable gaming keyboard
USB 1.1/2.0 keyboard for Windows® 2000 / XP / x64

Note: While the Razer Tarantula™ is designed to give you an edge over your opponents, it is not intended for automated gameplay.

CONTENTS

- 1** Package Contents
- 2** Razerguy's Message
- 3** Key Features
- 4** Installation/Registration/Tech Support
- 5** Configuring Your Keyboard
 - a. Driver Control Overview
 - b. Summary of Razer Synapse™/ Auto Profile Functions
- 6** Profile/Keymap Overview
- 7** Using Your Razer Tarantula™ Gaming Keyboard
 - a. Switching Profiles
 - b. Switching Keymaps
 - c. Examples
- 8** Glossary
- 9** Resetting To Factory Default
- 10** Safety And Maintenance
- 11** Legalese
- 12** WEEE Information

PACKAGE CONTENTS

- Razer Tarantula™ Gaming Keyboard
- Master Guide
- Quick Start Guide
- CD-ROM
- Certificate of Authenticity
- 10 Hot Keys With Icons
- Razer Tarantula™ Tool

2

“WE HAVE TAKEN OVER YOUR MOUSE, NOW IT'S TIME FOR YOUR KEYBOARD.”

The Razer Tarantula™ Gaming Keyboard is the first definitive gaming keyboard created For Gamers. By Gamers.™ in Razer's suite of advanced precision gaming peripherals. Offering high-end features such as anti-ghosting capability, low-latency Hyperresponse™ keys and for the first time ever, integrated intelligence with 32KB of onboard memory Powered By Razer Synapse™, the Razer Tarantula™ is specially engineered to empower competitive gamers with seamless control and unparalleled flexibility.

Enhance your gameplay on the Razer Tarantula™ with our range of BattleDock™ accessories*. The BattleLight™ bathes your keyboard in a soft glow and allows you to gain that unfair advantage over your rivals in low light conditions. The Razer Tarantula™ Gaming Keyboard can also be fitted with the BattleEye™ for an interactive visual and audio experience with your opponents. Other accessories will be released soon.

Customize your keypad with the Razer Tarantula™ Tool. Replace standard keys with a range of cool designs and completely customize the look of your own keyboard. Equipped with 10 programmable gaming macro keys for storing macros and keystrokes, the Razer Tarantula™ is an integrated control center with multimedia and imaging control keys.

We are a company of gamers who work closely with the gaming community and we know exactly what you want. The Razer Tarantula™ is designed to provide you with the much needed competitive edge in gameplay, made For Gamers. By Gamers.™ Undoubtedly, the Razer Tarantula™ will be the new benchmark in competitive gaming and you're at the helm of this technological revolution.

We know you're bustin' at your chops to put this baby through the rigors of gameplay. But before you do so, take some time to go through this Master Guide in order to unleash the maximum potential of your Razer Tarantula's capabilities.

We live by the mantra of

“FOR GAMERS. BY GAMERS™”
and it is imperative that we bring you into the fold.

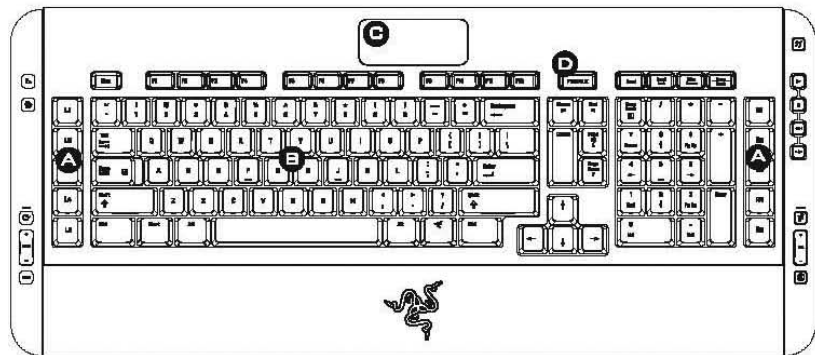
Sign up at www.razerzone.com for the latest news, product and driver announcements to stay ahead of the game. (I do assure you that all information provided will be kept private).

There's no turning back. You're one of us now.
Peace and great gaming.



RAZERGUY
razerguy@razerzone.com

(*The optional Razer BattleLight™ and Razer BattleEye™ accessories are sold separately)

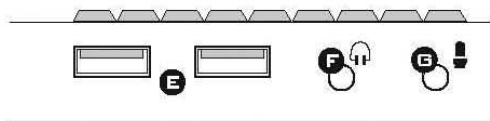


A Macro keys

B Interchangeable QWERTY keys

C BattleDock™ [to connect to BattleDock™ accessories]

D Profile change button



E USB ports [running at USB 1.1 speed]

F Earphone-out

G Microphone-in

FEATURES ON THE SIDES

Left side:

Zz Zzz

Home Home

Rotate Rotate

Zoom in/out Zoom in/out

100% 100%

- Standby

- Allows user to access browser home page

- Rotate right

- Zoom in and out of image files

- View image in full size

Right side:

Media button Media button

Play Play

Stop Stop

Fast rewind Fast rewind

Fast forward Fast forward

Shuffle Shuffle

Volume up/down Volume up/down

Mute Mute

- Activates the media player. (The default is Windows Media Player)

- Plays media files

- Stops media files

- Skips back tracks

- Skips forward tracks

- Plays songs on playlist randomly

- Turns the volume up and down

- Switches the volume off

INSTALLING YOUR KEYBOARD

1. Plug the keyboard into the USB port of your computer.
2. Insert the Razer™ driver CD into your CD-ROM.
3. The Setup screen appears. Click NEXT.
4. Read the license agreement and click NEXT.
5. Select the Program Folder where the driver software will reside. Click NEXT.
6. Select the location for the Razer™ menu. Click NEXT.
7. The install screen appears. The software will load automatically.
8. A screen appears indicating that the installation is complete. Click FINISH.
9. Restart your system.

Note:

If you install the Windows® 2000/XP/x64 driver when the keyboard is plugged into two specific USB ports, and later plug the keyboard into two different USB ports, it will not automatically use the Razer Tarantula™ driver. We recommend that you assign permanent ports for the Razer Tarantula™ keyboard.

REGISTER YOUR RAZER™ PRODUCT

At the end of the Razer™ software installation, just follow the prompts or get instant gratification at www.razerzone.com

What you'll get:

- One year limited manufacturer's warranty
- Free online support

TECHNICAL SUPPORT

For technical support, please visit www.razersupport.com

DRIVER CONTROL OVERVIEW

**1. Profile Selection Menu**

Change the currently active profile. Click the Profile Selection bar and choose the desired Profile from the Profile Selection Menu.

- Profile:** Indicates the Profile number
- Profile Name:** Double click this field to enter a Profile Name of your choice.
- .exe:** Double click this field to open up directory browsing. Select the executable file of the program you want the Profile to be associated with.
- Auto-Switching:** Check this to activate the current Profile as an On-The-Fly Gaming Profile.

**2. Keymap Selector**

Change the keymap by selecting Keymap A or Keymap B. [Keymaps can also be conveniently toggled by pressing and releasing the Profile button]. Each Profile will store two Keymaps to open up a wider range of configuration options.

Note: - Profile 1 – 5 will be stored on the keyboard. However you cannot use Auto Switching nor can you toggle between Keymaps.
- Keys which can be configured on a Keymap A and B can only be stored from Profile 6 to 100 on the local PC. Profile 1 to 5 will only support Keymap A.

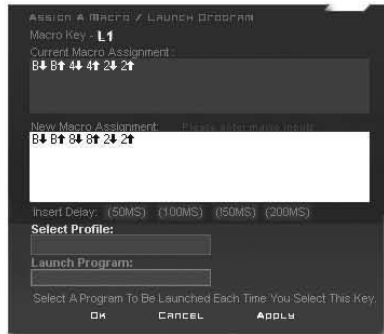
**3. Individual Button Assignment**

To change the individual button assignments of the respective Profile, click on one of the QWERTY keys and enter a new key where prompted. The button you chose will then be highlighted red or green, depending on the Keymap you have selected.

4. Macro Key Assignment

If a desired button function is not listed or if you would like to assign a macro, click one of the boxes under Macro Keys to open up the Assign A Macro/Launch Program window.

- Macro Assignment:**
Enter your macro in the New Macro Assignment box. You can choose to insert a delay time. Macros can be up to 8 keystrokes in length.
- Select Profile:**
Select a Profile you want the macro key to switch to.
- Launch Program:**
Select a program to launch with the macro key.





5. Profile Assignment

To change the default Profile assignments of a Function Key, click on any of the F1 – F12 keys and enter the Profile you want that key to be assigned to.

6. Media Player Options

You can choose what media player program to launch with the Media button.

7. Imaging Options

For the 3 imaging buttons [Rotate, Zoom In/Out, 100%) on the bottom-left side of the Razer Tarantula™, you can choose the appropriate imaging program to work hand-in-hand with the buttons.

8. Auto Switching Override

Check this to override all enabled Auto Switching Profiles in the Profile Selection Menu.

9. Show Changes On Screen

Check this to view visual changes such as the text 'Profile 1' on screen when Profile 1 is activated.

Note: Only Razer Synapse™ features are retained in the onboard memory of the Razer Tarantula™.

FUNCTIONS	RAZER SYNAPSE™ ONBOARD FUNCTIONS	AUTO PROFILES (DRIVER FEATURES)
PROFILE SELECTION MENU		
- PROFILE	✓	✓
- PROFILE NAME	✓	✓
- .EXE	x	✓
- AUTO SWITCHING	x	✓
KEYMAP SELECTOR		
- KEYMAP A	x	✓
- KEYMAP B	x	✓
MACRO KEY ASSIGNMENT		
- MACRO KEY ASSIGN	✓	✓
- SELECT PROFILE	✓	✓
- LAUNCH PROGRAM	x	✓
PROFILE ASSIGNMENT		
- SELECT PROFILE	x	✓
MEDIA PLAYER OPTIONS	x	✓
IMAGING OPTIONS	x	✓
AUTO-SWITCHING OVERRIDE	x	✓
SHOW CHANGES ON SCREEN	x	✓

There are a total of 100 customizable Profiles available.

1. Razer Synapse™ Profiles

For Profiles 1 – 5 (Razer Synapse™ Profiles), all settings will be saved on any of these Profiles you have currently selected and will be available on another computer even without the driver installation.

2. Auto Profiles

For Profiles 6 – 100 (Auto Profiles), settings for Keymap A and B are available only upon driver installation and will be accessible only on the local PC. Together with the drivers, Auto Profiles can be set to automatically detect which application is active and switch to the appropriate Profile accordingly.

3. Keymaps

What are they and why are we so excited about them?

Auto Profiles (Profiles 6 - 100) support two Keymaps, A and B. In effect this doubles the keyboard functionality of each Profile. This gives you unprecedented power and flexibility for those complex games and tasks that really need much more than your standard keys.

For example, you have configured your favourite Massively Multiplayer Online Game with all 26 QWERTY keys on Keymap A activating a specific spell, movement or combat control. Occasionally you need to type to chat with your party or guild mates. Just swap to Keymap B by hitting the Profile button, type your message using the default keyboard, then hit the Profile button again. Confirmations appear onscreen as text overlaying your game so you can confirm you're hitting the right buttons. All this is done seamlessly without interrupting your game session.

Just imagine, no more frantic hunting around for icons or moving your mouse away from the action to scroll a menu bar, and with one simple keypress, you get your regular keyboard back.

USING YOUR RAZER TARANTULA™ GAMING KEYBOARD

Your Razer Tarantula™ will remember all Razer Synapse™ settings from computer to computer without the need to install software drivers on each computer.

SWITCHING PROFILES

You can switch between the Profiles of your Razer Tarantula™ in 4 ways:

- a. By pressing Profile button + Function key (F1 – F12).

For example, to select Profile 4, hold on to 'Profile' and press 'F4'. Up to 12 Profiles may be preconfigured to occupy the positions F1 to F12.

Note: If there are no drivers installed on your computer, the Tarantula™ will default to Razer Synapse™ Profiles 1 - 5 being activated by F1 - F5 respectively.

- b. By selecting a Profile in the Synapse Configurator,
- c. By programming a macro key in the Synapse Configurator to activate a particular Profile.
- d. By configuring the F1 - F12 keys within the drivers to act as any of the 100 Profiles.

For Razer Synapse™ Profiles: Your Razer Tarantula™ will remember the currently active Profile even if turned off and will boot up in the active Profile.

SWITCHING KEYMAPS

You can switch between the Keymaps of your Razer Tarantula™ in 2 ways:

- a. By pressing the Profile button.

For example, when you are using Keymap B, press the Profile button once to activate Keymap A.

- b. By selecting a Keymap in the Synapse Configurator.

- 1) If the drivers are installed, Keymap switching will apply to Profile 6 to 99.
- 2) If the drivers are not installed, you will not be able to switch Keymaps.

Example 1: Selecting Profile 6 to activate upon loading of Game A

1. Open up Razer Tarantula™ Driver Control.
2. Click Profile Selection to open up the Profile Selection Menu.
3. Double click Profile 6's Profile Name column to enter the name you want to give that Profile.
4. Double click Profile 6's .exe column to open up the directory browser to locate Game A's executable file.
5. Select the checkbox of Profile 6's Auto-switching column to activate auto-switching.
6. Click Apply.
7. Click OK.

Example 2: Configuring Macro Key L2 (Profile 6) to buy a weapon

1. Open up your Razer Tarantula™ Gaming Keyboard Driver Control.
2. Click the Macro Key L2 field to open up the Assign A Macro/Launch Program window.
3. Click inside the New Macro Assignment box.
4. Press this sequence of keys: 'B', '4' and '4'. (Assuming buying a weapon involves entering buttons B, 4, 4 in this sequence. Inserting the delay will allow a higher success rate in activating the macro)
5. Click Apply.
6. Click OK.

Auto Profile

Profile stored in driver. Has Keymap A/B functionality. Is not remembered from PC to PC.

Auto Switching

Enabling auto switching will allow a particular Profile to load as an On-The-Fly Gaming Profile once you open a specified application. This only applies to Profiles 6 - 100.

Hot Keys

The Hot Keys are the optional keys with icons designed to be placed either on the QWERTY keys or on the Macro Keys.

Keymap

A Keymap is a set of macros and keystrokes that are stored under one Profile.

Macro Keys

These keys consist of buttons L1 - L5 and R1 - R5.

Profile

A Profile is able to store either one or two Keymaps. Storing two Keymaps means that two different sets of macros and keystrokes will be stored in one Profile. Using both Keymaps would effectively double the capacity of a Profile to store macros.

Razer Synapse™

Proprietary Razer Synapse™ enables you to store up to 5 onboard customizable profiles for different games onto your Razer Tarantula Gaming Keyboard.

Razer Synapse™ Profile

Profile stored in Razer Synapse™ memory. Has no Keymap toggling. Is remembered from PC to PC.

RESETTING TO FACTORY DEFAULT

To reset the Razer Tarantula™ Gaming Keyboard to factory default, press and hold the Profile Button for 10 seconds while the Razer Tarantula™ is connected to a powered on computer.

NB: ALL CONFIGURATION SETTINGS WILL BE LOST WHEN YOU RESET THE RAZER TARANTULA™ TO FACTORY DEFAULT SETTINGS. ALL CONFIGURATION SETTINGS WILL NEED TO BE RE-ENTERED OR LOADED FROM THE CONTROL PANEL AFTER THE RAZER TARANTULA™ GAMING KEYBOARD IS RESET.

SAFETY AND MAINTENANCE

SAFETY GUIDELINES

In order to achieve maximum safety while using your Razer Tarantula™ Gaming Keyboard, we suggest that you adopt the following guidelines:

1. Should you have trouble operating the keyboard properly and troubleshooting does not work, unplug the device and contact the Razer™ hotline or go to www.razerzone.com for support. Do not attempt to service or fix the device yourself at any time.

2. Do not take apart the keyboard (doing so will also void your warranty) and do not attempt to service it yourself or operate it under abnormal current loads.

3. Keep your keyboard away from liquid, humidity or moisture. Operate your keyboard only within the specified temperature range of 0°C (32°F) to 40°C (104°F). Should you operate it in a temperature that is beyond this range, unplug and switch off the device in order to let the temperature stabilize within the optimal temperature range.

COMFORT

Here are some tips to ensure that you are comfortable while using your keyboard. Research has shown that long

periods of repetitive motion, improper positioning of your computer peripherals, incorrect body position, and poor habits may be associated with physical discomfort and injury to nerves, tendons, and muscles. Please follow these guidelines to ensure comfortable use of your keyboard and avoid injury.

1. Position your keyboard and monitor directly in front of you with your mouse next to it. Place your elbows next to your side, not too far away and your mouse within easy reach.

2. Adjust the height of your chair and table so that the keyboard and mouse are at or below elbow height.

3. Keep your feet well supported, posture straight and your shoulders relaxed.

4. During gameplay, relax your wrist and keep it straight. If you do the same tasks with your hands repeatedly, try not to bend, extend or twist your hands for long periods.

5. Do not rest your wrists on hard surfaces for long periods. Use a wrist support to support your wrist while gaming.

6. Customize the buttons on your keyboard to suit your style of gaming in order to minimize repetitive or awkward motions while gaming.

7. Make sure your fingers are resting on the keyboard buttons comfortably.

8. Do not sit in the same position all day. Get up, step away from your desk and do exercises to stretch your arms, shoulders, neck and legs.

9. If you should experience any physical discomfort while using your keyboard, such as pain, numbness, or tingling in your hands, wrists, elbows, shoulders, neck or back, please consult a qualified medical doctor immediately.

MAINTENANCE AND USE

There is a little regular maintenance to keep the Razer Tarantula™ Gaming Keyboard in optimum condition. Once a month, we recommend that you unplug the keyboard from the USB port and clean the keys on the Razer Tarantula™ with a soft cloth or cotton swab. Use a little warm water but no soap or harsh cleaning agents. Try to keep the BattleDock™ covered with the Dock cover when not in use.

LEGALESE

COPYRIGHT INFORMATION

©2006 Razer USA Ltd. All Rights Reserved. Razer, the Razer Triple-Headed Snake logo, the Razer distressed word logo, the Razer Boomslang, the Razer Diamondback, the Razer Copperhead, the Razer Tarantula, the Razer Tarantula logo, BattleDock, the BattleDock logo, BattleLight, the BattleLight logo, BattleEye, the BattleEye logo, The Ultimate Gaming Keyboard, Razer Synapse, the Razer Synapse logo, Razer eXactmat, Razer eXactRest are all trademarks of Razer. All other trademarks are the property of their respective owners. Razer™ assumes no responsibility for any errors that may appear in this manual. Information contained herein is subject to change without notice.

Razer™ may have patents, patent applications, trademarks, copyrights, trade secrets or other property rights, intellectual and otherwise concerning the product and subject matter in this manual. Except as is provided in any written license agreement provided by Razer™, furnishing of this manual does not give you a license to any such patents, trademarks, copyrights or other intellectual property rights, whether registered or otherwise. Razer Tarantula™ - Patent Pending.

SOFTWARE LICENSE AGREEMENT (‘AGREEMENT’)

RAZER™ IS WILLING TO LICENSE THE ENCLOSED SOFTWARE TO YOU ONLY ON THE CONDITION THAT YOU ACCEPT ALL OF THE TERMS CONTAINED IN THIS LICENSE AGREEMENT. This is a legal agreement between you [either an individual end-user, corporate entity or any other entity whatsoever] and Razer™. By installing, uploading, copying or utilizing in any way the software, you are agreeing to be bound by the terms and conditions of this Agreement. If you do not agree to the terms of this Agreement, do not install the software and promptly return the software package and other items that are part of this product in their original package with your payment receipt to your point of purchase for a full refund.

GRANT OF LICENSE

Razer™ grants you a non-exclusive, revocable license to

use one copy of the enclosed software program, licensed and not sold to you, (“Software”) on one computer only with the Razer™ product you have purchased. No other rights are granted. The Software is in use if it is installed, including but not limited to loaded on the computer’s permanent or temporary memory. For backup purposes only, you may make one copy of the Software for your own use. You must include on the backup copy all copyright and other notices included in the Software as supplied by Razer™. Installation on a network server for the sole purpose of your internal distribution of the Software is permitted only if you have purchased an individual Software package or concurrent dedicated license for each networked computer to which the Software is distributed.

RESTRICTIONS

Razer™ retains full ownership of the Software. You shall not directly and/or indirectly attempt to decompile, disassemble, reverse-engineer, or modify the Software licensed to you in any way except as allowed by law. You may not transmit the Software over a network (except as expressly permitted above) or electronically using any means. You may not directly and/or indirectly transfer the Software except upon a permanent transfer of the enclosed Razer™ product provided that all Software updates are included in the transfer, you do not retain a copy of the Software, and the transferee agrees to be bound by the terms and conditions in this license. Upon any violation of any of the provisions of the Agreement, your rights to use the software shall automatically terminate and all copies of the Software must be returned to Razer™ or destroyed.

LIMITATION OF LIABILITY

The warranties set forth in this agreement replace and/or supersede all other warranties and your remedies for breach of warranty are expressly limited to those herein set forth. Razer™ expressly disclaims all other warranties to the extent allowed by law including, but not limited to, the implied warranties of merchantability, fitness for a particular purpose and non-infringement of third-party rights with respect to the documentation, software (including patches and/or updates) and hardware. No Razer™ supplier, dealer, agent, or employee is authorized to make any modifica-

tion, extension or alteration of the warranty or to substitute products or services, lost profits, loss of information or data, or any other special, indirect, consequential or incidental damages arising in any way out of the distribution of, sale of, resale of, use of, or inability to use any product or software subject to warranty herein set forth. In no event will Razer™ be liable for any special, incidental, indirect or consequential damages whatsoever.

COSTS OF PROCUREMENT PRODUCT OR SERVICE

For the avoidance of doubt, in no event will Razer™ be liable for any costs of procurement unless it has been advised of the possibility of such damages, and in no case shall Razer™ be liable for any costs of procurements liability exceeding the actual money paid for the products subject to warranty at issue.

In the event some jurisdictions do not allow the limitation of implied warranties or liability for incidental, consequential, special, or indirect damages, the above limitation may not apply. The above limitations will not apply in case of personal injury where and to the extent that applicable laws require such liability.

U.S. GOVERNMENT RESTRICTED RIGHTS

The Software is provided to the U.S. government only with restricted rights and limited rights. Use, duplication, or disclosure by the U.S. Government is subject to restrictions set forth in 48 C.F.R. 2.101 (October 1995), consisting of "Commercial Computer Software" and "Commercial Computer Software Documentation as such terms are used in 48 C.F.R. 12.212 (September 1995), and in FAR Sections 52-227-14 and 52-227-19 r DFARS Section 52-227-7013 ©(1) (ii), or their successors, as applicable. Consistent with 48 C.F.R. 12.512 and 48 C.F.R. 227-7202-1 through 27-7204-4 (June 1995), or any successor regulations, this Software is provided to U.S. Government users pursuant to the terms and conditions herein.

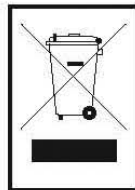
FCC DECLARATION OF CONFORMANCE

This equipment has been tested and found to comply with the limits for a Class B digital device, pursuant to part 15 of the FCC Rules. These limits are designed to provide reasonable protection against harmful interference in a

residential installation. This equipment generates, uses and can radiate radio frequency energy and, if not installed and used in accordance with the instructions, may cause harmful interference to radio communications. However, there is no guarantee that interference will not occur in a particular installation. If this equipment does cause harmful interference to radio or television reception, which can be determined by turning the equipment off and on, the user is encouraged to try to correct the interference by one or more of the following measures:

- Reorient or relocate the receiving antenna.
- Increase the separation between the equipment and the receiver.
- Connect the equipment into an outlet on a circuit different from that to which the receiver is connected.
- Consult the dealer or an experienced radio TV technician for help.

For more information, refer to the online help system on your Razer Tarantula™ Gaming Keyboard CD ROM or www.razerzone.com



English

Correct Disposal of This Product (Waste Electrical & Electronic Equipment)

[Applicable in the European Union and other European countries with separate collection systems]

This marking shown on the product or its literature, indicates that it should not be disposed with other household wastes at the end of its working life. To prevent possible harm to the environment or human health from uncontrolled waste disposal, please separate this from other types of wastes and recycle it responsibly to promote the sustainable reuse of material resources. Household users should contact either the retailer where they purchased this product, or their local government office, for details of where and how they can take this item for environmentally safe recycling. Business users should contact their supplier and check the terms and conditions of the purchase contract. This product should not be mixed with other commercial wastes for disposal.

French

Comment éliminer ce produit [déchets d'équipements électriques et électroniques]

[Applicable dans les pays de l'Union Européenne et aux autres pays européens disposant de systèmes de collecte sélective]

Ce symbole sur le produit ou sa documentation indique qu'il ne doit pas être éliminé en fin de vie avec les autres déchets ménagers. L'élimination incontrôlée des déchets pouvant porter préjudice à l'environnement ou à la santé humaine, veuillez les séparer des autres types de déchets et les recycler de façon responsable. Vous favoriserez ainsi la réutilisation durable des ressources matérielles. Les particuliers sont invités à contacter le distributeur leur ayant vendu le produit ou à se renseigner auprès de leur mairie pour savoir où et comment ils peuvent se débarrasser de ce produit afin qu'il soit recyclé en respectant l'environnement. Les entreprises sont invitées à contacter leurs fournisseurs et à consulter les conditions de leur contrat de vente. Ce produit ne doit pas être éliminé avec les autres déchets commerciaux.

Italian

Corretto smaltimento del prodotto (rifiuti elettrici ed elettronici)

[Applicabile in i paesi dell'Unione Europea e in quelli con sistema di raccolta differenziata]

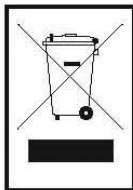
Il marchio riportato sul prodotto o sulla sua documentazione indica che il prodotto non deve essere smaltito con altri rifiuti domestici al termine del ciclo di vita. Per evitare eventuali danni all'ambiente o alla salute causati dall'inopportuna smaltimento dei rifiuti, si invita l'utente a separare questo prodotto da altri tipi di rifiuti e di riciclarlo in maniera responsabile per favorire il riutilizzo sostenibile delle risorse materiali. Gli utenti domestici sono invitati a contattare il rivenditore presso il quale è stato acquistato il prodotto e l'ufficio locale preposto per tutte le informazioni relative alla raccolta differenziata e al riciclaggio per questo tipo di prodotto. Gli utenti aziendali sono invitati a contattare il proprio fornitore e verificare i termini e le condizioni del contratto di acquisto. Questo prodotto non deve essere smaltito unitamente ad altri rifiuti commerciali.

German

Korrekte Entsorgung dieses Produkts [Elektronik]

[Anzuwenden in den Ländern der Europäischen Union und anderen europäischen Ländern mit einem separaten Sammelsystem]

Die Kennzeichnung auf dem Produkt bzw. auf der dazugehörigen Literatur gibt an, dass es nach seiner Lebensdauer nicht zusammen mit dem normalen Haushaltsmüll entsorgt werden darf. Entsorgen Sie dieses Gerät bitte getrennt von anderen Abfällen, um der Umwelt bzw. der menschlichen Gesundheit nicht durch unkontrollierte Müllbeseitigung zu schaden. Recyceln Sie das Gerät, um die nachhaltige Wiederverwertung von stofflichen Ressourcen zu fördern. Private Nutzer sollten den Händler, bei dem das Produkt gekauft wurde, oder die zuständigen Behörden kontaktieren, um in Erfahrung zu bringen, wie sie das Gerät auf umweltfreundliche Weise recyceln können. Gewerbliche Nutzer sollten sich an Ihren Lieferanten wenden und die Bedingungen des Verkaufsvertrags konsultieren. Dieses Produkt darf nicht zusammen mit anderem Gewerbemüll entsorgt werden.



Spansk

Eliminación correcta de este producto (material eléctrico y electrónico de descarte)

[Aplicable en la Unión Europea y en países europeos con sistemas de recogida selectiva de residuos]

La presencia de esta marca en el producto o en el material informativo que le acompaña, indica que al finalizar su vida útil no deberá eliminarse junto con otros residuos domésticos. Para evitar los posibles daños al medio ambiente o a la salud humana que representa la eliminación incontrolada de residuos, separe este producto de otros tipos de residuos y recíclalo correctamente para promover la reutilización sostenible de recursos materiales. Los usuarios particulares pueden contactar con el establecimiento donde adquirieron el producto, o con las autoridades locales pertinentes, para informarse sobre cómo y dónde pueden llevarlo para que sea sometido a un reciclaje ecológico y seguro. Los usuarios comerciales pueden contactar con su proveedor y consultar las condiciones del contrato de compra. Este producto no debe eliminarse mezclado con otros residuos comerciales.

Portugués

Eliminação Correcta Deste Produto (Resíduo de Equipamentos Eléctricos e Electrónicos)

Esta marca, apresentada no produto ou na sua literatura indica que ele não deverá ser eliminado juntamente com os resíduos domésticos indiferenciados no final do seu período de vida útil. Para impedir danos ao ambiente e à saúde humana causados pela eliminação incontrolada de resíduos deverá separar este equipamento de outros tipos de resíduos e reciclá-lo de forma responsável, para promover uma reutilização sustentável dos recursos materiais. Os utilizadores domésticos deverão contactar ou o estabelecimento onde adquiriram este produto ou as entidades oficiais locais para obterem informações sobre onde e de que forma podem levar este produto para permitir efectuar uma reciclagem segura em termos ambientais. Os utilizadores profissionais deverão contactar o seu fornecedor e consultar os termos e condições do contrato de compra. Este produto não deverá ser misturado com outros resíduos comerciais para eliminação.

Dansk

Korrekt affaldsbortskaffelse af dette produkt (elektrisk & elektronisk udstyr)

Mærket på dette produkt eller i den medfølgende dokumentation betyder, at produktet ikke må bortskaffes sammen med almindeligt husholdningsaffald efter endt levetid. For at undgå skadelige miljø- eller sundhedspåvirkninger på grund af ukontrolleret affaldsbortskaffelse skal dette produkt bortskaffes særskilt fra andet affald og indleveres behørigt til fremme for bæredygtig materialgenvinding. Hjemmebrugere bedes kontakte forhandleren, hvor de har købt produktet, eller den lokale myndighed for oplysning om, hvor og hvordan de kan indlevere produktet med henblik på miljøforsvartlig genvinding. Erhvervsbrugere bedes kontakte leverandøren og læse betingelserne og vilkårene i købekontrakten. Dette produkt bør ikke bortskaffes sammen med andet erhvervsaffald.